



ARCASeries Range Hood

Installation Guide Operation Manual



IMPORTANT REMINDERS

USE

- This range hood has been designed for domestic household use only to eliminate smoke and odor.
- Commercial usage for café's, restaurants, and other similar establishments will void the warranty of this product.
- Never use the range hood for purposes other than extracting kitchen smoke and odor.
- Never leave high open flames under the hood when it is in operation.
- This range hood is not a toy. Please keep children and other unauthorized persons not instructed to use the hood away from the appliance.

INSTALLATION

- The manufacturer will not be held liable for any damages resulting from incorrect or improper installation.
- Installation must be carried out by a qualified and authorized ELBA Service Technician.
- The minimum safety distance between the cooktop and the range hood is 650 millimeters (mm).
- Check that the electrical supply from the outlet to which it is to be plugged in is matching with the requirements of the hood, as indicated by the product label on the range hood.
- The exhaust pipe should have a minimum diameter of 150 millimeters (mm)

MAINTENANCE

- Switch off and unplug the appliance from the main power supply before carrying out any maintenance work. (When disconnecting the appliance, do not pull on the cord as it might cause a short circuit. Instead, hold the plug and apply pressure on it when pulling from the wall socket.)
- Clean the hood using a damp cloth and a neutral liquid detergent.
- Clean and/or replace the filters after the specified time period.
- There is risk of fire if cleaning is not carried out in accordance with the guidelines and instructions as highlighted in the section "CLEANING AND MAINTENANCE".

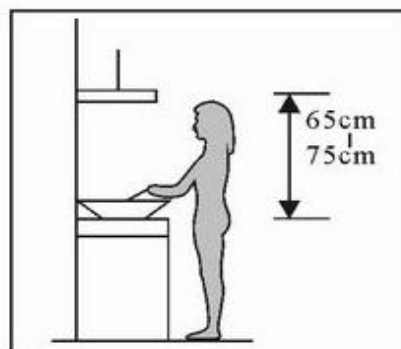
LIABILITY

- The Manufacturer will not be held liable for any damages incurred as a result of the improper installation, usage, and maintenance of this product.

INSTALLATION

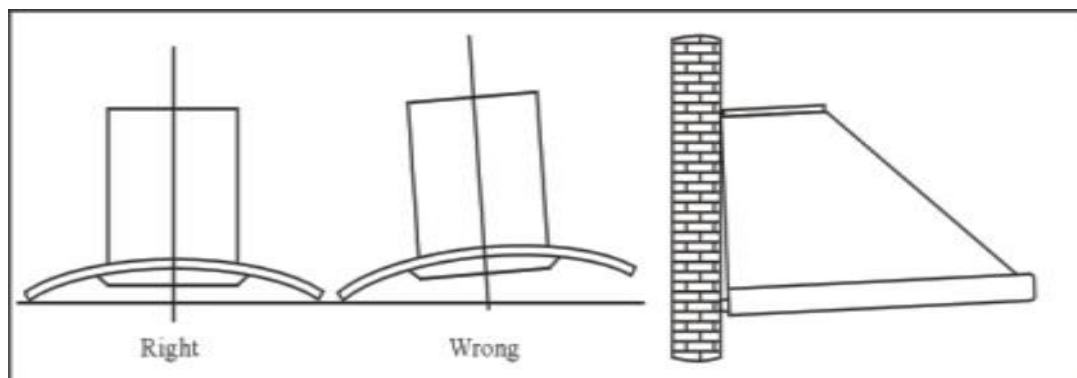
Important Notes:

- The hood should be placed at a distance of 65-75cm from the cooking surface for maximum performance.
- The exhaust pipe should have a minimum diameter of 150 millimeters (mm)
- Try to avoid too many corner bends when installing the exhaust pipe in order to ease airflow and noise.



Pic1

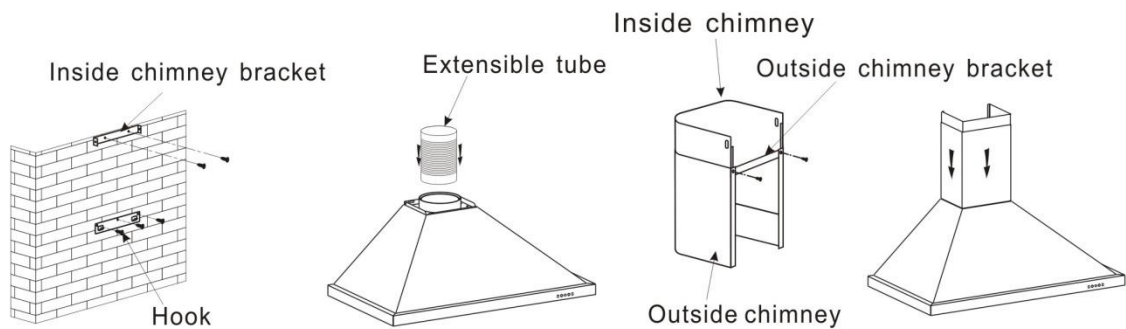
- Install the bracket on a hard and sturdy surface (with bracing if possible). Make sure that the surface screws are long enough to bite into the wall and tightened with enough torque.
- Make sure that the range hood is aligned properly, not tilted in either a sideward or front/backward direction.



Pic5

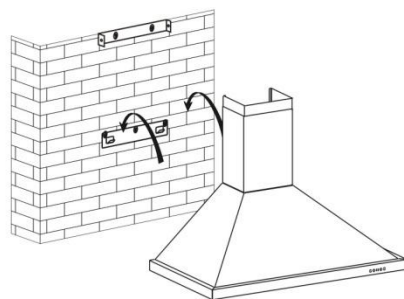
Models Without Glass Components:

1. Fix the lower/outer chimney bracket on to the wall by drilling two (2) holes with the corresponding size of the screws provided as seen in pic 2.
 - *Note that this will be where the range hood is also mounted.*
2. Measure the height desired for the chimney extension portion (upper/inner chimney) and affix the bracket once finished as seen in pic 2.
3. Make sure that the exhaust pipe can fit properly within the outer and inner chimney sections.
4. Attach the range hood onto the hooks that are attached to the lower bracket. Make sure that these are hooked on properly before letting go of the item as seen in pic 4.
5. Fix the body with additional reinforcement / safety screws for additional support as seen in pic 5.
 - **Note that the two additional holes for the safety screws are positioned at the back of the casing with a diameter of 6mm.*

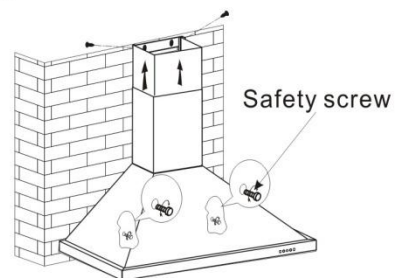


Pic2

Pic3



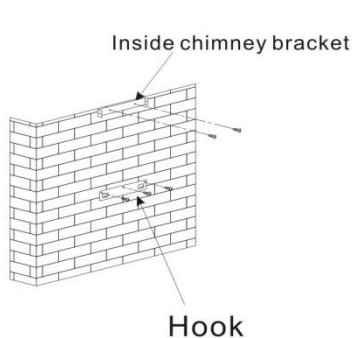
Pic4



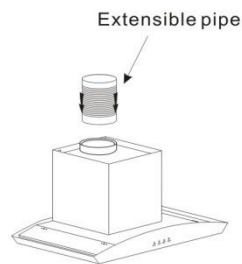
Pic5

Models With Glass Components

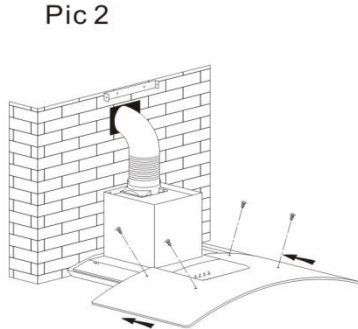
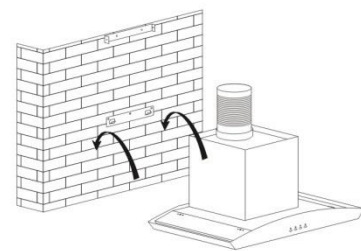
1. Fix the lower/outer chimney bracket on to the wall by drilling two (2) holes with the corresponding size of the screws provided as seen in pic 2.
 - *Note that this will be where the range hood is also mounted.*
2. Measure the height desired for the chimney extension portion (upper/inner chimney) and affix the bracket once finished as seen in pic 2.
3. Make sure that the exhaust pipe can fit properly within the outer and inner chimney sections.
4. Attach the range hood onto the hooks that are attached to the lower bracket. Make sure that these are hooked on properly before letting go of the item as seen in pic 3.
5. Affix the glass according onto the body of the range hood by using the supplied screws as seen in pic 4.
6. Fix the body with additional reinforcement / safety screws for additional support as seen in pic 5.
 - **Note that the two additional holes for the safety screws are positioned at the back of the casing with a diameter of 6mm.*



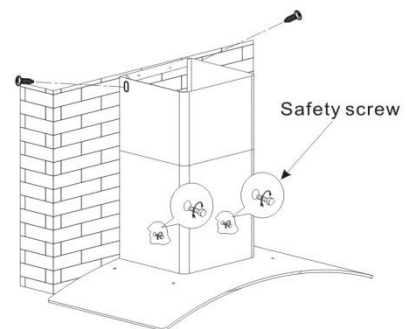
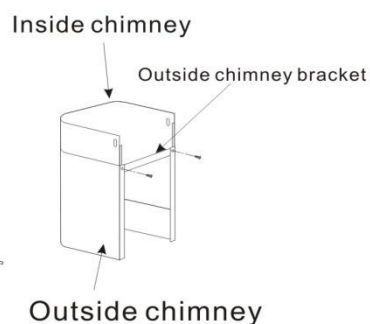
Pic 2



Pic 3



Pic 4



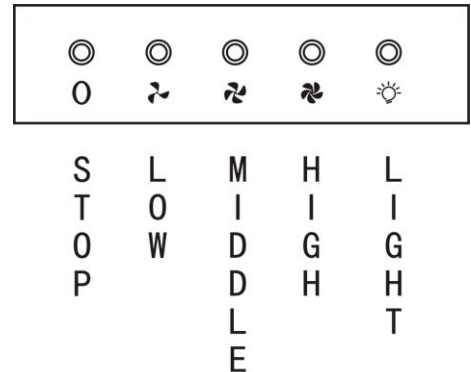
Pic 5

OPERATION

Controls

The switch is operated as illustrated.

- “0”, press to turn off
- “low”, press to activate speed setting 1
- “middle” press to activate speed setting 2
- “high”, press to activate speed setting 3
- “light”, press to turn on, depress to turn off



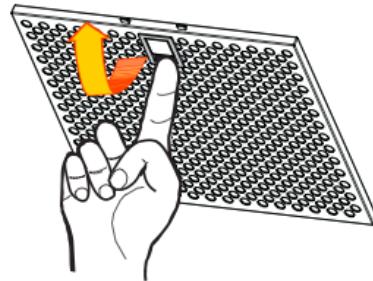
PIC6

CLEANING AND MAINTENANCE

Aluminium Filters

This unit comes equipped with removable aluminium filters that are to be cleaned on a regular basis in order to maintain the performance and longevity of the hood.

Instruction: To remove the filters, press the clip located at the front, pull down the filters, and release the clip.



Cleaning the Filters

1. Prepare a large basin with 40-60 degrees Celsius of warm water and add a mild detergent to mix with the water.
 - Note: DO NOT use any corrosive detergent when cleaning.
2. Soak the aluminium filters for two (2) to five (5) minutes in the basin to loosen the build-up of oil and grease.
3. Use a soft brush with fine bristles to gently scrub the aluminium filters. Apply moderate strength, so as not to damage the filter.
4. Allow the filter to air dry until it is completely free from any moisture.

Recommendation: Clean the filters at least once every month for regular usage, or more frequently for heavy usage. Visually inspect the filter for trapped oil and grease on a regular basis in order to maximize the performance of the hood.

Warranty Exemption: The aluminium filters are a consumable item and are not covered by the warranty of this item. Any defects caused by the negligence in cleaning the filters will also void the warranty of the hood.

LED Lights

This unit comes equipped with energy efficient LED bulbs.

Instruction: Please call the service centre for the replacement of the LED bulb modules. It is suggested that you do not try to replace this yourself, as it might cause electrical shock.

Warranty Exemption: The incandescent bulbs are a consumable item and are not covered by the warranty of this item.

Cleaning the Body Casing

Do not use harsh / aggressive chemicals and rough sponges that can damage the material finish of the range hood.

1. Use a soft damp cloth to wipe the body casing to remove dust particles.
2. After which, use a dry cloth wipe down any excessive moisture left by the damp cloth.
3. You may use a dedicated stainless steel cleaner (for stainless steel finishes) to finish off the cleaning process.